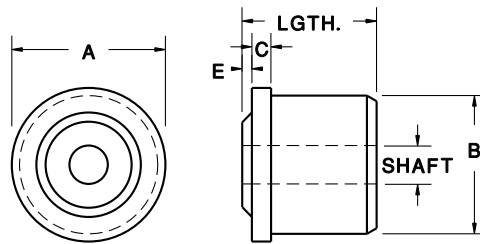
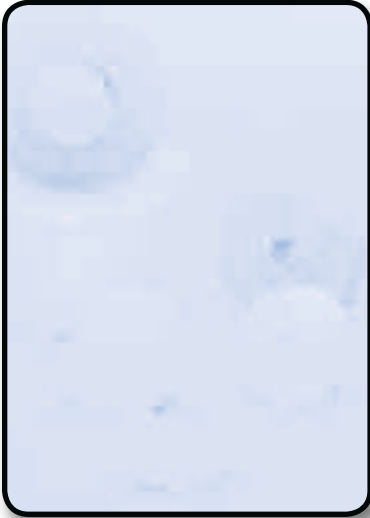


Roll-End Bearings



Specify shaft size for quotes or when placing an order.

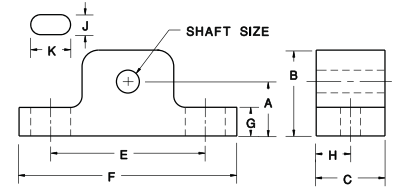


Standard Duty Roll End Bearings

Wood	UHMW	OF/ UHMW	A (Tube OD)	Gauge (Wall Thk.)	B (Tube ID)	Length	C	E
0304048	0301048	0303048	1-3/8	18	1.277	1-1/4	3/16	1/16
0304049	0301049	0303049		16	1.245	1-1/4	3/16	1/16
0304050	0301050	0303050	1-1/2	18	1.402	1-1/2	3/16	1/16
0304051	0301051	0303051		16	1.370	1-1/2	3/16	1/16
0304052	0301052	0303052		14	1.334	1-1/2	3/16	1/16
0304054	0301054	0303054	1-5/8	16	1.495	1-1/2	3/16	1/16
0304055	0301055	0303055		11	1.385	1-1/2	3/16	1/16
0304056	0301056	0303056	1.660	1-1/4 SCH 40	1.380	1-1/2	3/16	1/16
0304057	0301057	0303057		1-1/4 SCH 80	1.278	1-1/2	3/16	1/16
0304059	0301059	0303059	1-3/4	16	1.620	1-1/2	3/16	1/16
0304060	0301060	0303060		14	1.584	1-1/2	3/16	1/16
0304065	0301065	0303165	1.900	1-1/2 SCH 40	1.610	1-1/2	3/16	1/16
0304066	0301066	0303166		1-1/2 SCH 80	1.500	1-1/2	3/16	1/16
0304069	0301069	0303069	2	16	1.870	1-5/8	1/4	1/8
0304070	0301070	0303070		14	1.834	1-5/8	1/4	1/8
0304072	0301072	0303072		11	1.760	1-5/8	1/4	1/8
0304073	0301073	0303073	2.197	2 EMT	2.067	1-5/8	1/4	1/8
0304074	0301074	0303074	2-1/4	18	2.152	1-5/8	1/4	1/8
0304075	0301075	0303075		16	2.120	1-5/8	1/4	1/8
0304076	0301076	0303076		14	2.084	1-5/8	1/4	1/8
0304080	0301080	0303080	2-3/8	16	2.245	1-5/8	1/4	1/8
0304081	0301081	0303081		13	2.185	1-5/8	1/4	1/8
0304083	0301083	0303083	2.375	2 SCH 40	2.067	1-5/8	1/4	1/8
0304084	0301084	0303084		2 SCH 80	1.939	1-5/8	1/4	1/8
0304085	0301085	0303085	2-1/2	16	2.370	1-5/8	1/4	1/8
0304086	0301086	0303086		14	2.334	1-5/8	1/4	1/8
0304087	0301087	0303087		13	2.310	1-5/8	1/4	1/8
0304090	0301090	0303090	2-3/4	16	2.620	1-5/8	1/4	1/8
0304091	0301091	0303090		13	2.560	1-5/8	1/4	1/8
0304093	0301093	0303093	2.875	2-1/2 SCH 40	2.469	1-5/8	1/4	1/8
0304094	0301094	0303094		2-1/2 SCH 80	2.323	1-5/8	1/4	1/8
0304095	0301095	0303095	3	16	2.870	1-3/4	1/4	1/8
0304096	0301096	0303096		14	2.834	1-3/4	1/4	1/8
0304097	0301097	0303097		13	2.810	1-3/4	1/4	1/8
0304098	0301098	0303098		11	2.760	1-3/4	1/4	1/8
0304104	0301104	0303104	3.5	3 SCH 40	3.068	1-3/4	1/4	1/8
0304105	0301105	0303105		3 SCH 80	2.900	1-3/4	1/4	1/8
0304108	0301108	0303108	4	16	3.870	1-3/4	1/4	1/8
0304109	0301109	0303109		14	3.834	1-3/4	1/4	1/8
0304110	0301110	0303110		13	3.810	1-3/4	1/4	1/8
0304111	0301111	0303111		11	3.760	1-3/4	1/4	1/8
0304112	0301112	0303112	4.000	3-1/2 SCH 40	3.548	1-3/4	1/4	1/8
0304113	0301113	0303113		3-1/2 SCH 80	3.364	1-3/4	1/4	1/8
0304114	0301114	0303114	5	11	4.760	1-3/4	1/4	1/8
0304115	0301115	0303115	6	11	5.760	1-3/4	1/4	1/8
0304116	0301116	0303116	6.625	6 SCH 40	6.065	1-3/4	1/4	1/8
0304117	0301117	0303117		6 SCH 80	5.761	1-3/4	1/4	1/8

Pillow Blocks

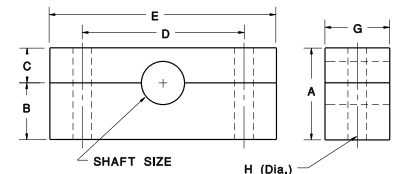
Wood	UHMW	OF/ UHMW	Shaft Size	A	B	C	E	F	G	H	J	K
130401	130101	130301	1/2	1-3/16	1-7/8	1-1/2	3-3/8	4-3/4	5/8	3/4	7/16	7/8
130402	130102	130302	5/8	1-3/16	1-7/8	1-1/2	3-3/8	4-3/4	5/8	3/4	7/16	7/8
130403	130103	130303	3/4	1-5/16	2-1/4	1-1/2	3-3/4	5-1/4	5/8	3/4	7/16	15/16
130407	130107	130307	1	1-7/16	2-1/2	1-1/2	4	5-1/2	3/4	3/4	7/16	15/16
130409	130109	130309	1-1/8	1-11/16	2-3/4	1-1/2	4-3/4	6-1/4	7/8	3/4	9/16	1-1/16
130411	130111	130311	1-1/4	1-7/8	3-1/4	1-3/4	5	6-1/2	7/8	7/8	9/16	1-1/16
130414	130114	130314	1-1/2	2	3-1/4	1-3/4	5-3/8	7	7/8	1	9/16	1-1/16
130415	130115	130315	1-3/4	2-1/8	3-3/4	2	5-3/4	7-1/2	7/8	1	9/16	1-1/16
130417	130117	130317	2	2-1/2	4-1/2	2	6-3/4	8-3/4	1	1	11/16	1-5/16
130419	130119	130319	2-1/4	2-3/4	4-3/4	2-1/2	7-1/2	9-1/2	1	1-1/4	11/16	1-5/16



PILLOW BLOCK

Split Pillow Blocks

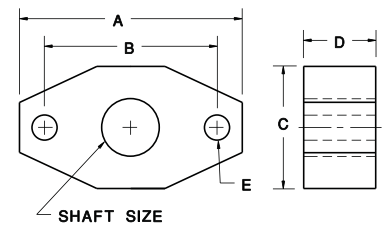
Wood	UHMW	OF/ UHMW	Shaft Size	A	B	C	D	E	G	H
130422	130122	130322	1/2	2-3/16	1-3/16	1	3-3/8	4-3/4	1-1/2	7/16
130423	130123	130323	5/8	2-3/16	1-3/16	1	3-3/8	4-3/4	1-1/2	7/16
130424	130124	130324	3/4	2-1/2	1-5/16	1-3/16	3-3/4	5-1/4	1-1/2	7/16
130427	130127	130327	1	2-3/4	1-7/16	1-5/16	4	5-1/2	1-1/2	7/16
130431	130131	130331	1-1/4	3-5/8	1-7/8	1-3/4	5	6-1/2	1-3/4	9/16
130433	130133	130333	1-1/2	4	2	2	5-3/8	7	1-3/4	9/16
130434	130134	130334	1-3/4	4-1/4	2-1/8	2-1/8	5-3/4	7-1/2	2	9/16
130436	130136	130336	2-1/2	4	2-1/4	1-3/4	3-1/4	4-1/2	1-3/4	9/16
130437	130137	130337	3	4-1/2	2-1/4	2-1/4	3-3/4	5	1-3/4	9/16



SPLIT PILLOW BLOCK

2-Bolt Flange Blocks

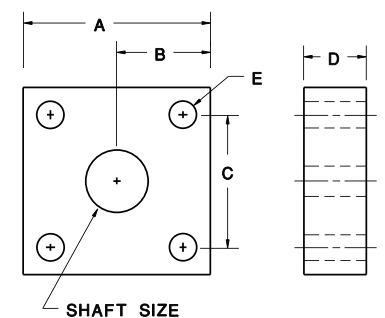
Wood	UHMW	OF/UHMW	Shaft Size	A	B	C	D	E
130438	130138	130338	1/2	3-7/8	3	2-1/8	1-1/4	7/16
130439	130139	130339	3/4	4-7/16	3-9/16	2-1/2	1-1/2	7/16
130440	130140	130340	1	4-15/16	3-7/8	2-3/4	1-1/2	7/16
130442	130142	130342	1-1/4	6-1/8	5-1/8	3-5/8	1-3/4	9/16
130444	130144	130344	1-1/2	6-13/16	5-5/8	4	2	9/16



2-BOLT FLANGE

4-Bolt Flange Blocks

Wood	UHMW	OF/UHMW	Shaft Size	A	B	C	D	E
130445	130145	130345	1/2	3	1-1/2	2-1/8	1	7/16
130446	130146	130346	3/4	3-3/8	1-11/16	2-1/2	1-1/4	7/16
130447	130147	130347	1	3-3/4	1-7/8	2-3/4	1-1/4	7/16
130449	130149	130349	1-1/4	4-3/4	2-1/8	3-5/8	1-1/2	9/16
130451	130151	130351	1-1/2	5-1/8	2-9/16	4	1-3/4	9/16
130453	130153	130353	2	6-3/8	3-3/16	5-1/8	1-3/4	9/16



4-BOLT FLANGE